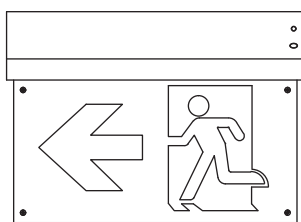


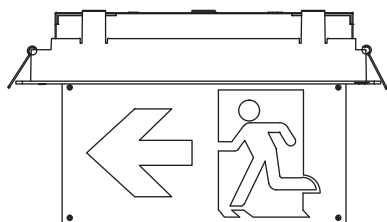
Emergency Exit

Installation / Maintenance Instructions

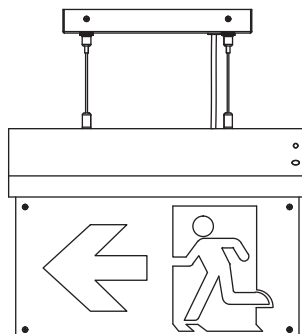
LIGHT FORMS



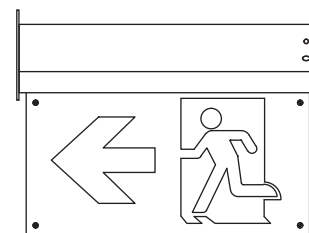
EM-00005



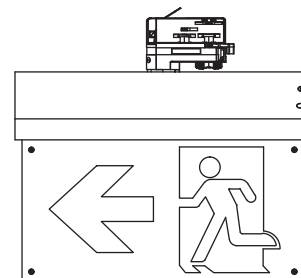
EM-00006



EM-00007



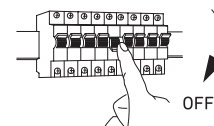
EM-00008



EM-00009

Precautions and Warnings

- Read all instructions carefully, the safety of this product is only guaranteed if the instructions are followed, retain these instructions for future use.
- Turn off the power supplier before installation and maintenance.
- Installation must be carried out by a trained professional in accordance with all National electrical codes and regulations.
- To avoid the risk of fire and overheating, make sure all connection, including those made by others, are correct and secure.
- Do not pinch or apply excessive tension on the electrical wires. Damage due to improper handling and installation will void the warranty.
- If there is any damage to the product or the cable, the product must be returned to the retailer or manufacturer.



Electrical Specification

Class:	Class 2
Input power (MAX):	3.5W Non)
Frequency:	50/60Hz
Input voltage:	200-240V
Discharge efficiency:	≥80%
Output power:	1.8W ±0.3W
Power factor:	≥0.3%

Rated input current:	≥0.03A
Full load output voltage:	DC2.8-3.2V
Output current range:	580mA±10%
Surge:	0.5KV
Withstand voltage:	AC3750V
Short circuit protection:	Pass
Over voltage production:	Pass

Light Forms
UK Head Office

LightForms.com

8 Richfield Avenue
Reading
RG1 8EQ

T +44 (0)20 8571 3785
E London@
LightForms.com

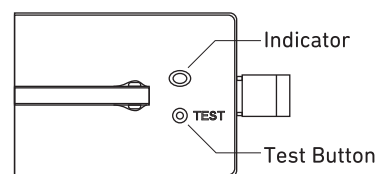
Emergency Exit

Installation / Maintenance Instructions

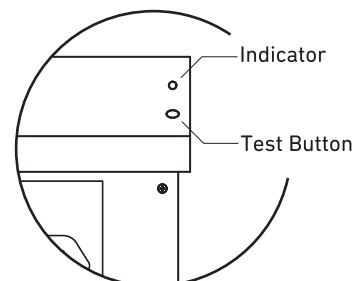
LIGHT FORMS

Instructions for Automatic Testing

- Once the unit is powered up, a self diagnostics test will run automatically.
- Note the Status Indicator and Status from the table below.
- When the fault is corrected, press the test button for two seconds. The Red indicator will turn Green.



- It is possible to use the Test Button to perform manual tests.
- Run three Min duration test every month.
- Run one hour or three hour duration test every year.



AUTO Test

Green: Solid:	System OK
Red: Solid:	Requires Service
Green: one flash, 4s pause:	Battery disconnected
Green: two flash, 4s pause:	Low battery voltage
Green: three flash, 4s pause:	Charge board fault
Green: four flash, 4s pause:	AC/DC transfer fault
Green: five flash, 4s pause:	LED lamp fault

MANUAL Test

Press test button once:	Run a 30s duration test
Press test button twice in 2s:	Run a three Min duration test
Press test button three times in 2s:	Run a 30 Min duration test
Press test button three times in 2s:	Run a one hour or three hour duration test
Press and hold test button for 2s	Fault clear and reset

DALI Test

Green: Solid:	System OK
Green: 0.1s flash, 0.1s pause:	Function test underway
Green: 1s flash, 1s pause :	Duration test underway
Red: Solid:	Load failure
Red: 0.1s flash, 0.1s pause:	Battery failure
Red: 1s flash, 1s pause:	Charging Failure
Green: Double Pulse:	Inhibit Mode
Green and Red: OFF	Emergency Mode

Light Forms
UK Head Office

LightForms.com

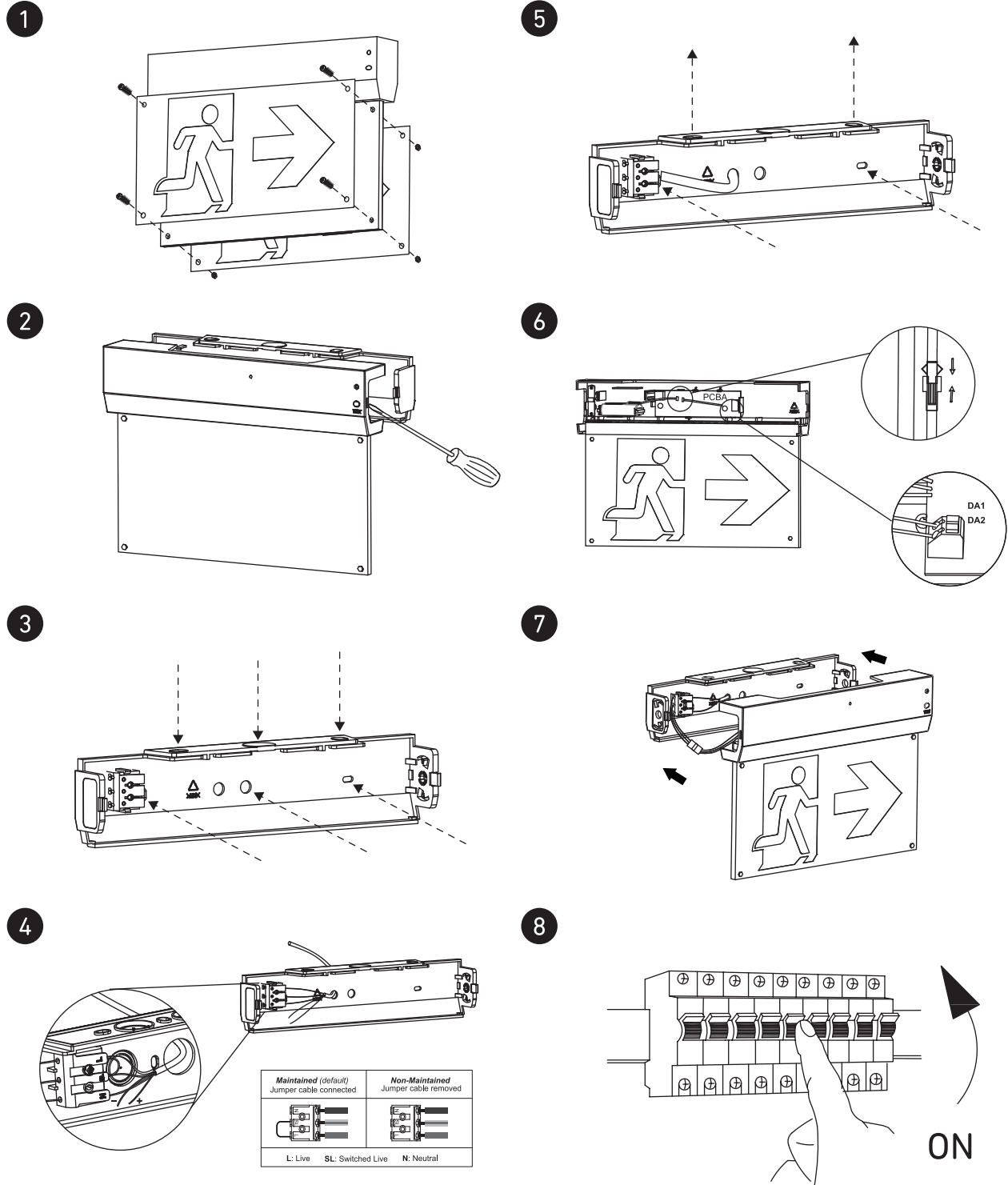
8 Richfield Avenue
Reading
RG1 8EQ

T +44 (0)20 8571 3785
E London@
LightForms.com

Emergency Exit Surface

Installation / Maintenance Instructions

LIGHT FORMS



1. Apply the pictograms as required. Use the four clear plastic screws and nuts provided.
2. Use a small flathead screwdriver to remove the back plate from the fascia plate.
3. Knock out the appropriate mounting holes and cable entry holes from the back plate.
4. Bring AC supply into the back plate through the side or top entry hole and make electrical connections.
5. Mount the back plate to the wall or ceiling using appropriate fixings.
6. If DALI make connection into the connector block on the small PCBA mounted on the fascia plate. Connect the battery leads.
7. Clip the fascia plate and back plate back together.
8. Turn on power.

Light Forms
UK Head Office

LightForms.com

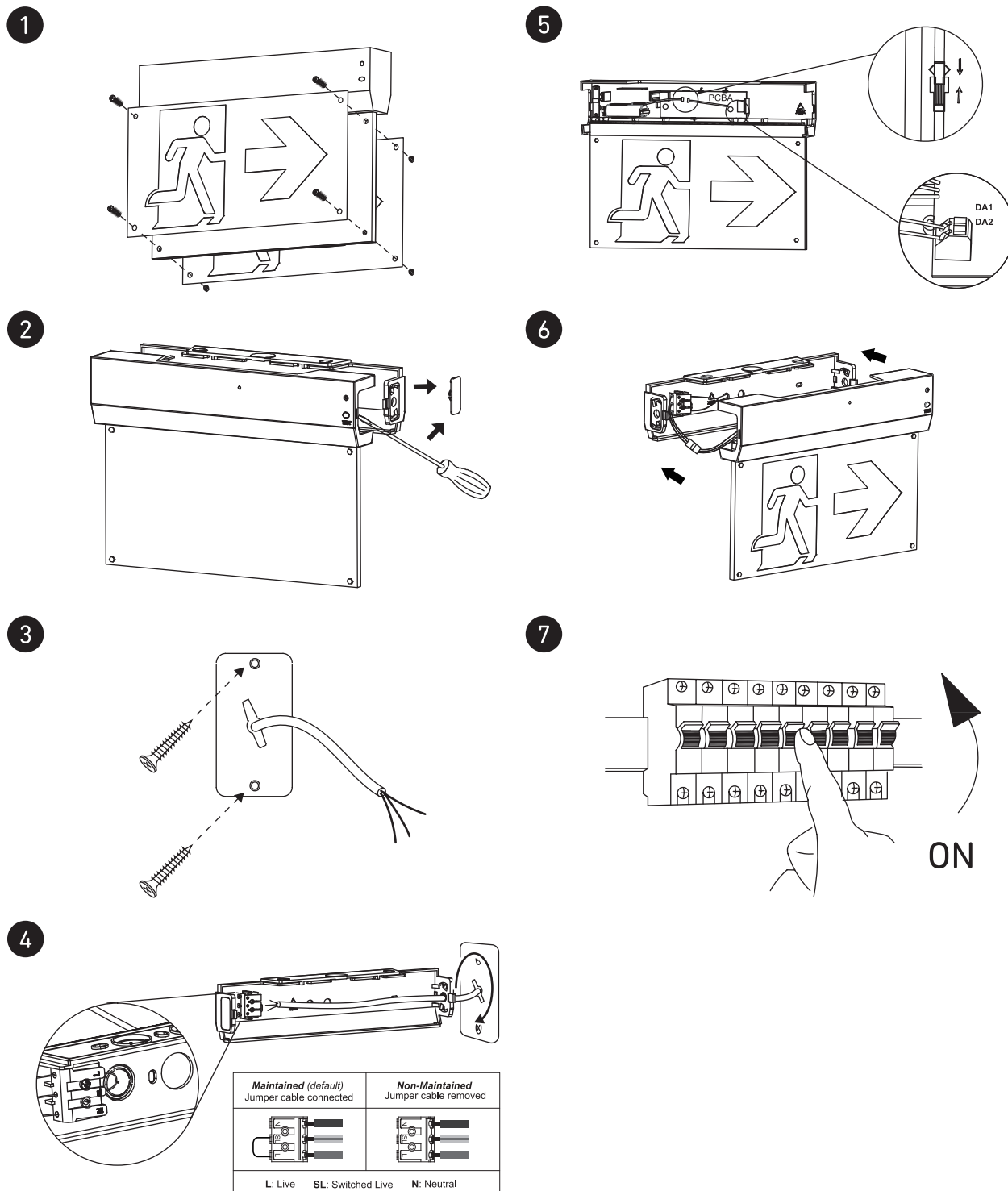
8 Richfield Avenue
Reading
RG1 8EQ

T +44 (0)20 8571 3785
E London@
LightForms.com

Emergency Exit Wall

Installation / Maintenance Instructions

LIGHT FORMS



1. Apply the pictograms as required. Use the four clear plastic screws and nuts provided.
2. Use a small flathead screwdriver to remove the back plate from the fascia plate, then remove hole plug on the test switch side.
3. Mount the back plate to the wall using appropriate fixings and feed through the AC supply and data cables.
4. Bring AC supply into the back plate and make electrical connections. Twist the back plate onto the wall bracket.
5. If DALI make connection into the connector block on the small PCBA mounted on the fascia plate. Connect the battery leads.
6. Clip the fascia plate and back plate back together.
7. Turn on power

Light Forms
UK Head Office

LightForms.com

8 Richfield Avenue
Reading
RG1 8EQ

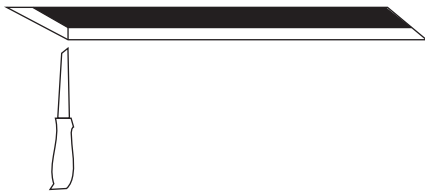
T +44 (0)20 8571 3785
E London@
LightForms.com

Emergency Exit Recessed

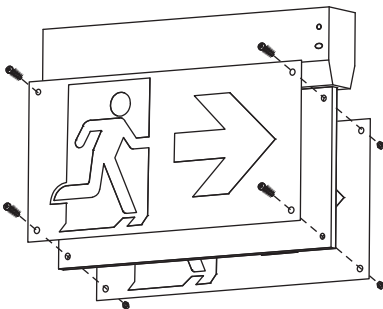
Installation / Maintenance Instructions

LIGHT FORMS

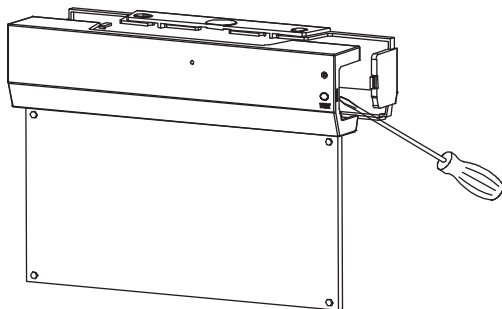
1



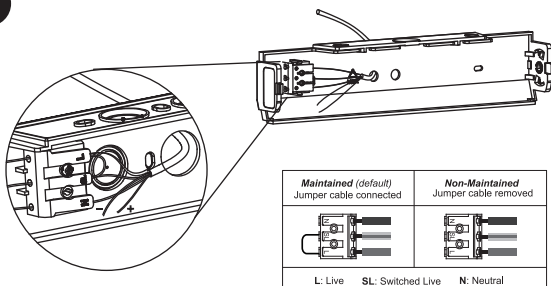
2



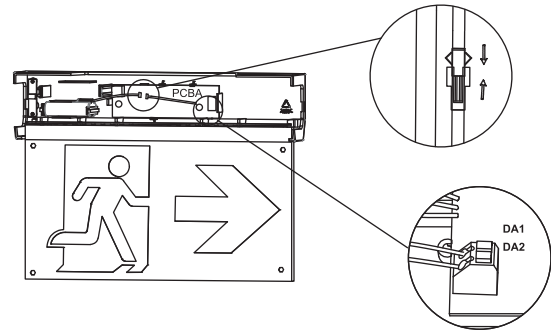
3



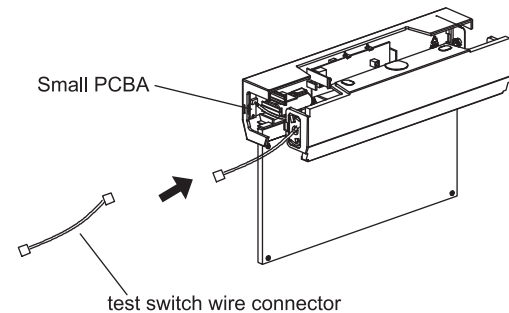
4



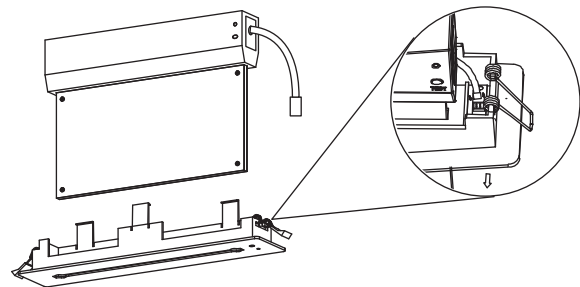
5



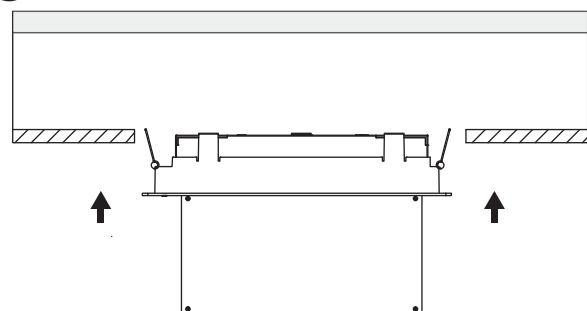
6



7



8



1. Cut hole in ceiling. 358-362mm x 55-58mm Minimum recess depth 85mm
2. Apply the pictograms as required. Use the four clear plastic screws and nuts provided.
3. Use a flathead screwdriver to remove the back plate from the fascia plate, then remove the hole plug on the test switch side.
4. Bring AC supply into the back plate through the side or top entry hole and make electrical connections.
5. If DALI make connection into the connector block on the small PCBA mounted on the fascia plate. Connect the battery leads.
6. Connect the test switch connector into the small PCBA inside the luminaire, and reattach the back plate.
7. Insert the body into the recessed kit. Make sure the fixture is secure. Connect the plug into the recessed kit.
8. Insert luminaire into the ceiling.
9. Turn on Power

Light Forms
UK Head Office

LightForms.com

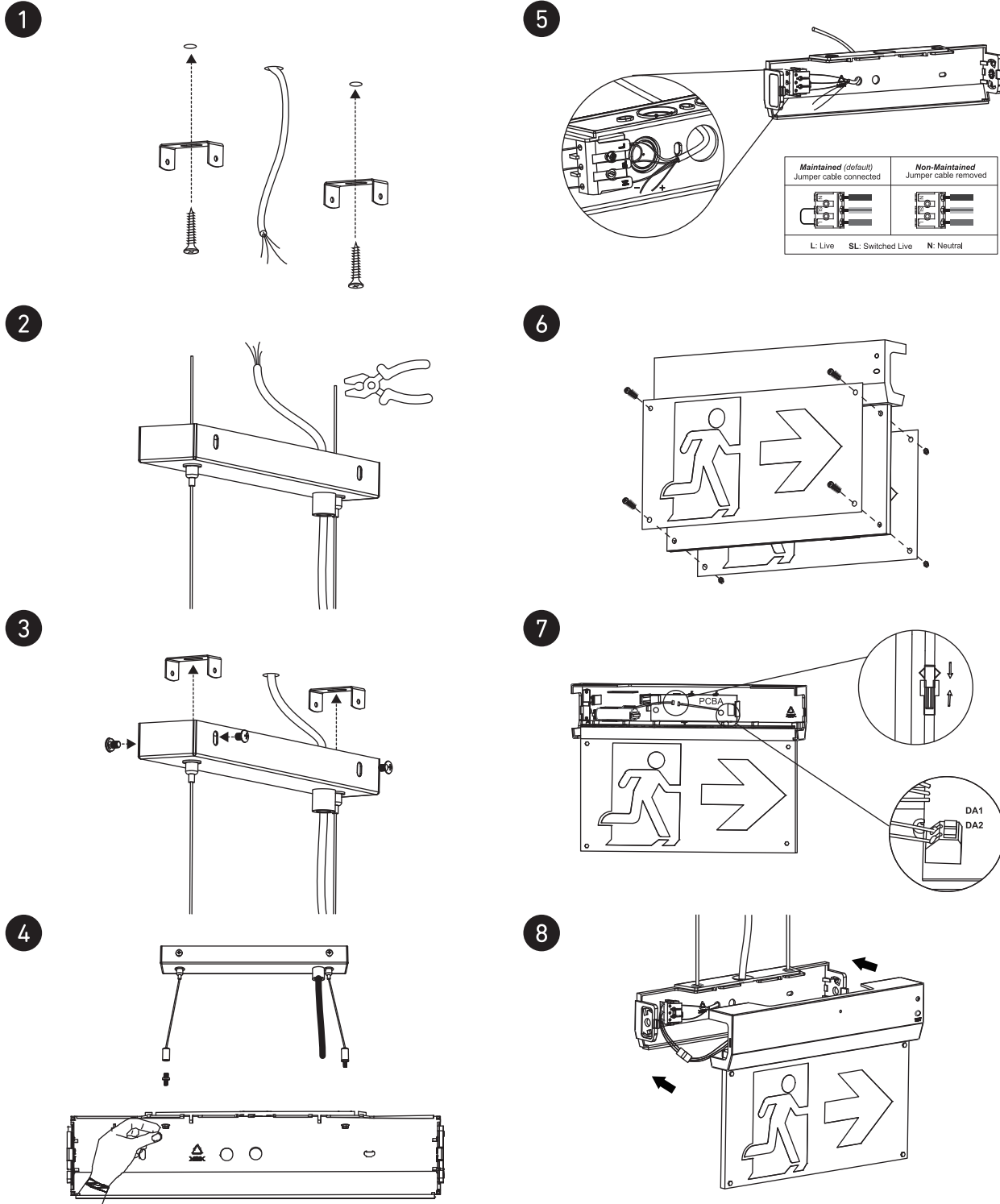
8 Richfield Avenue
Reading
RG1 8EQ

T +44 (0)20 8571 3785
E London@
LightForms.com

Emergency Exit Suspended

Installation / Maintenance Instructions

LIGHT FORMS



1. Screw ceiling brackets to the ceiling - 145mm spacing. And bring through AC supply cable.
2. Measure and cut the tensile wires and power cable. Make the electrical connections between the AC supply and the power cable.
3. Screw the ceiling housing onto the brackets.
4. Assemble the threaded coupler into the tensile wire bullet. Pass the coupler through the back plate and secure with the nuts provided.
5. Bring AC into the back plate through the top entry hole and make electrical connections.
6. Apply the pictograms as required. Use the four clear plastic screws and nuts provided.
7. If DALI make connection into the connector block on the small PCBA mounted on the fascia plate. Connect the battery leads.
8. Clip the fascia plate and back plate back together.
9. Turn on power

Light Forms
UK Head Office

LightForms.com

8 Richfield Avenue
Reading
RG1 8EQ

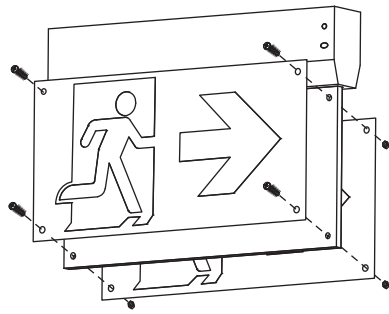
T +44 (0)20 8571 3785
E London@
LightForms.com

Emergency Exit Track

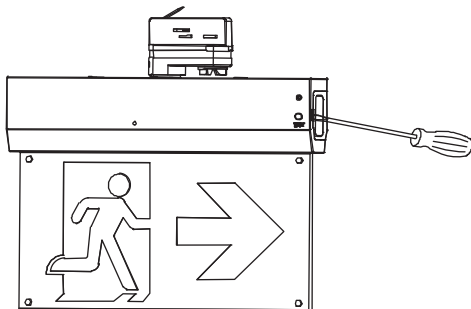
Installation / Maintenance Instructions

LIGHT FORMS

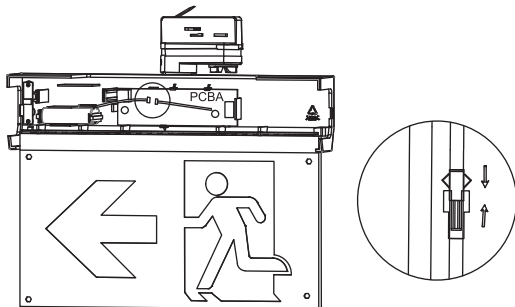
1



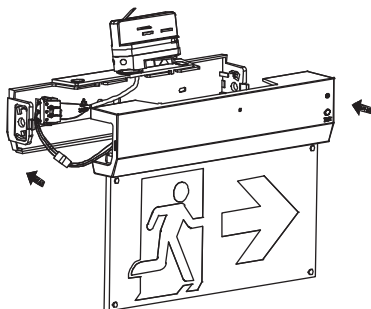
2



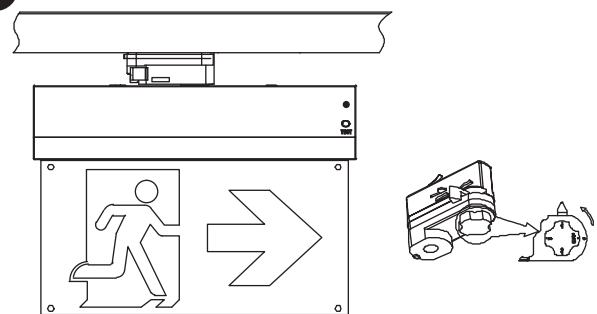
3



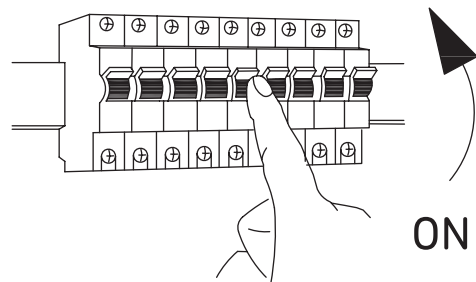
4



5



6



1. Apply the pictograms as required. Use the four clear plastic screws and nuts provided.
2. Use a flathead screwdriver to remove the back plate from the fascia plate, then remove the hole plug on the test switch side.
3. Connect the battery leads.
4. Clip the fascia plate and back plate back together.
5. Select the circuit.
6. Turn on power

Light Forms
UK Head Office

LightForms.com

8 Richfield Avenue
Reading
RG1 8EQ

T +44 (0)20 8571 3785
E London@
LightForms.com

Registered in England & Wales
No. 6750892

ISO 9001 Quality Management
ISO 14001 Environmental Management
ISO 45001 Occupational Health & Safety Management