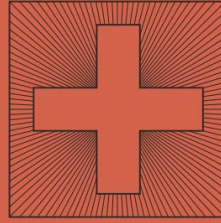


EM Track

EM-00001

209mm x 101mm x 63mm

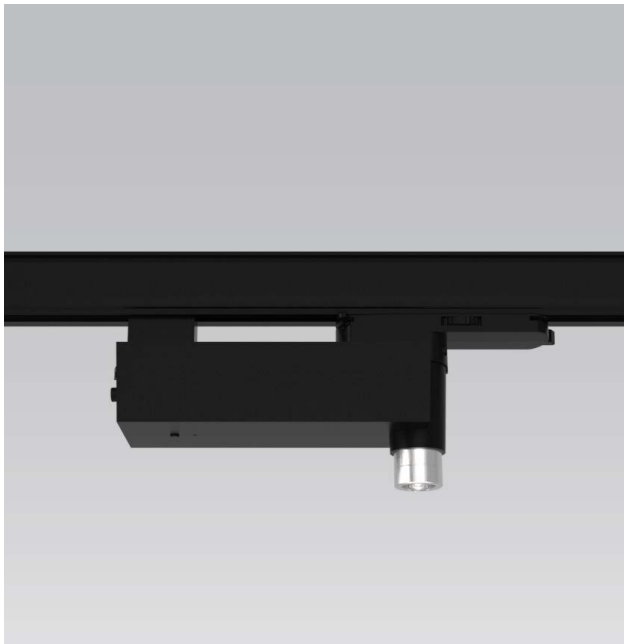
226mm x 118mm x 63mm (DALI)



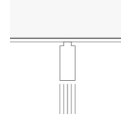
LIGHT FORMS

Emergency

Specification



Track Mount



Features

Available in black and white.

3x Optics available
Narrow Round - 30°
Wide Round - 140°
Corridor - 160°x60°

Suitable for 3 phase track.

Maintained (6W Max) and
Non-maintained (3.5W Max)
mode selectable.

220lm

CCT - 5000K

CRI - >70

LiFePO4 6.4V 1500mAh
battery.

Discharge duration of >3 hours.

Class II

Made from polycarbonate.

0°C to 45°C operating
temperatures.

Photometry and additional documentation at:
[LightForms.com/products/emergency/EM Track/](https://LightForms.com/products/emergency/EM%20Track/)

LightForms.com

Page 1

Europe@

LightForms.com

Asia@

LightForms.com

Manchester@

LightForms.com

EM Track

LIGHT FORMS

EM-00001

EM - 00001 - - - 03 - 750 - - - - -

1. Finish Options

White - WH
Black - BK

2. Nominal Power Options

220lm 3W - 03

3. Chip Options

70CRI 5000K - 750

4. Beam Degree Options

Narrow Beam (30°) - SP
Wide (140°) - WI
Corridor (160°x60°) - CO

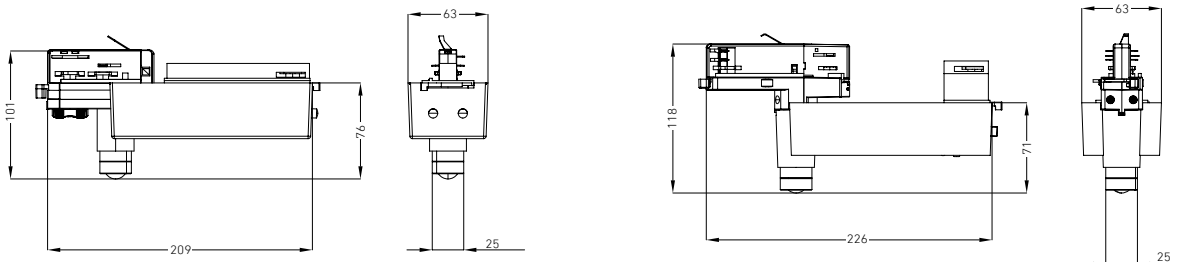
5. Testing Options

Auto Test - AUT
DALI - DAL

Electrical Specification

Input Power (MAX)	6 W (Maintained), 3.5W (Non-Maintained)
Frequency	50/60Hz
Input Voltage	200-240V
Discharge Efficiency	≥80%
Output Power	1.7W ± 0.3W
Power Factor	≥0.3%
Rated Input Current	≥0.03A
Full Load Output Voltage	DC 2.8-3.2V
Output Current Range	585mA ±25mA
Surge	0.5KV
Withstand voltage	AC3750V
Short Circuit Protection	Pass
Over voltage protection	Pass

Dimensions

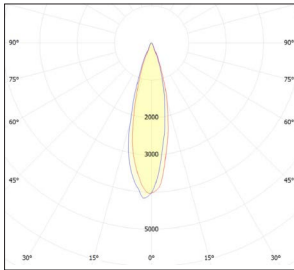


EM Track

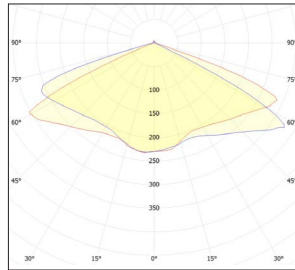
EM Track DALI

EM-00001

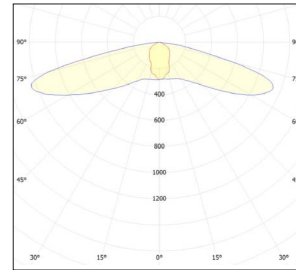
Distribution



30°



140°



160° x 60°

Warranty

5-year fixture warranty.
3-year battery warranty.

Operating temperature

Ta Max 45°C

Manufacturing & certification

Products are manufactured in and comply with the health, safety and environmental protection standards of the respective region in which they are sold.



Europe



United Kingdom



Greater India
and Middle East