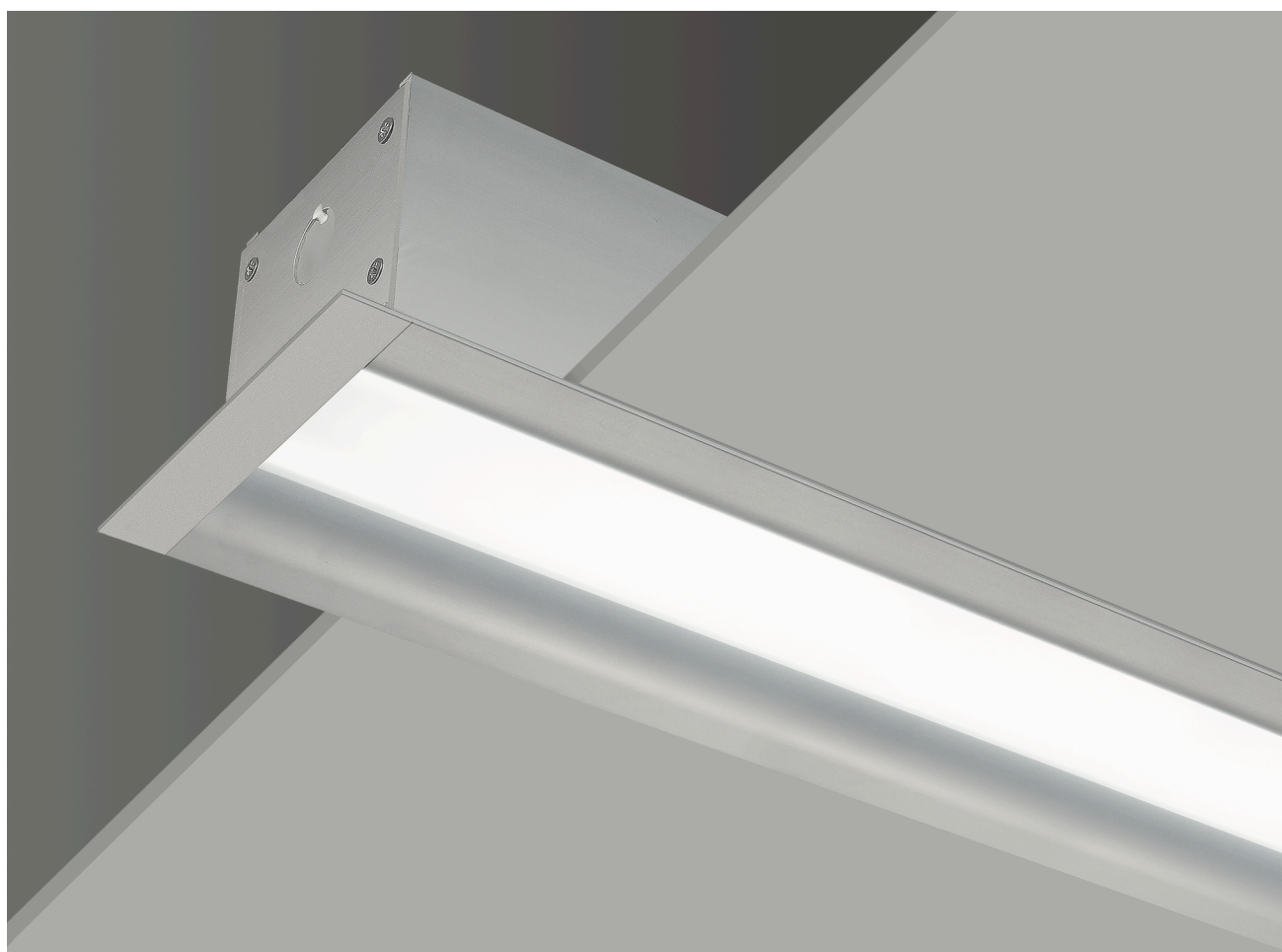


# LIGHTPLANE 3.5 RECESSED OUTER ARC LP3.5ROA

Recessed - with Trim



# LIGHTPLANE 3.5 RECESSED OUTER ARC

Recessed with Trim

# LIGHT FORMS

## 1. Base Model

---

LP3.5ROA

Recessed - with Trim

## 2. Run Length

---

Enter length in mm for custom lengths.

See **Standard Lengths and Shapes** PDF for standard products.

## 3. LED Lamping

---

LOWUGR- **xxxx**K

LOW- **xxxx**K (example: LOW-4000K)

MED - **xxxx**K (example: MED-4000K)

HI - **xxxx**K (example: HI-4000K)

STD - TW

HI - TW

STD - RGBW - **xxxx**K

HI - RGBW - **xxxx**K

## 4. LED Driver

---

1-10V

DALI

DMX

NONDIM

OTHER

1-10V dimming

DALI dimming

DMX dimming

Non-dimmable

(Consult factory for options)

## 5. Finish

---

AL

BK

WH

RAL/ \_\_\_\_

BRONZE

Standard, natural aluminium

Black powdercoat

White powdercoat

Specify RAL powdercoat (ex: #RAL/3003)

Bronze powdercoat

## 6. Additional options

---

EM

DALIEM

DALIEMPRO

PIR-A

PIR-P

DALIPIR

OTHER

3 hour Emergency Kit

3 hour DALI Emergency Driver/Battery

3 hour DALI EMPRO Emergency Driver/Battery

PIR Absence Detector

PIR Presence Detector

DALI PIR Sensor

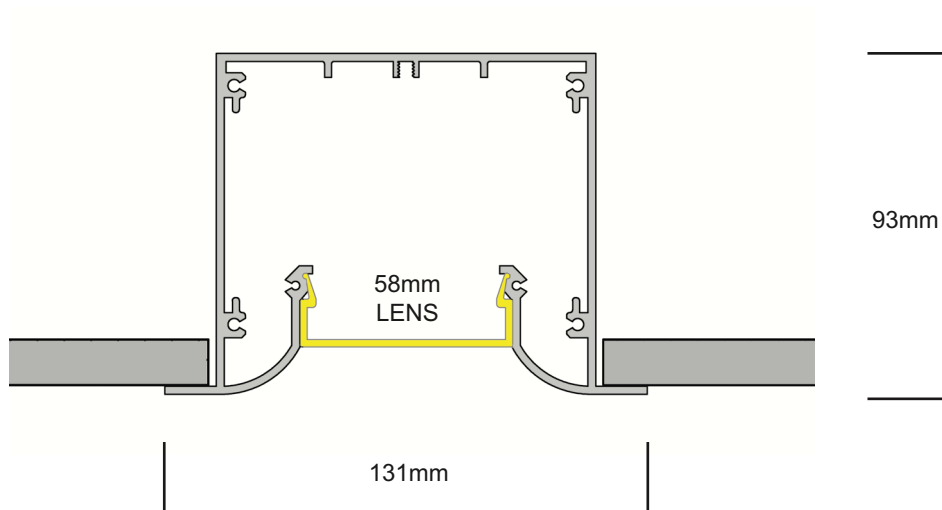
Contact Factory

# LIGHTPLANE 3.5 RECESSED OUTER ARC

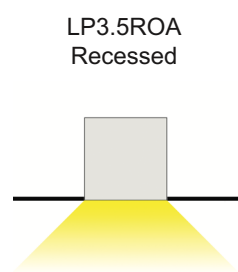
Recessed with Trim

**L I G H T  
F O R M S**

## Dimensions



## Mounting Options



# LIGHTPLANE 3.5 RECESSED OUTER ARC

Recessed with Trim

# LIGHT FORMS

---

## Housing

100% recyclable, extruded architectural grade T6061 aluminium

## Emergency

Luminaires can be wired for emergency circuit and/or emergency battery backup.  
Consult factory for options.

## Options

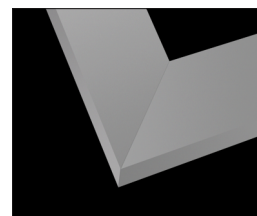
Mitered Corners

Consult factory for mitered corner angle options.

## Finish

Standard finish is "Ultimate" aluminium - a smooth, clean and durable finish achieved from a deep-etch and two step clear anodizing process.

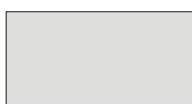
White, Black, Bronze or custom RAL powdercoat options are also available.



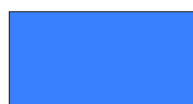
Mitered Corners



WH - WHITE



AL - ALUMINIUM



RAL/\_\_\_\_

*Default canopy finish  
is to match fitting color,  
unless otherwise  
specified*



BK - BLACK



BRONZE

LIGHT FORMS - CONFIGURATION SHEET - REV 1

### Light Forms

Architectural Lighting  
[www.lightforms.com](http://www.lightforms.com)

Registered in England  
No. 6750892

Registered Address  
Unit 7C Boeing Way  
International Trading Centre  
Middlesex, UB2 5LB

### UK

Unit 7C Boeing Way  
International Trading Estate  
Middlesex  
UB2 5LB

T +44 (0)20 8571 3785  
F +44 (0)20 8090 3755  
E [ask@lightforms.com](mailto:ask@lightforms.com)

### India

353/2 Dr Hira Singh Road  
Civil Lines  
Ludhiana 141001  
Punjab, India

T +91 98 7280 0488  
E [ajay@lightforms.com](mailto:ajay@lightforms.com)

### China

Unit 3, Building A  
No. 9 Phoenix Road  
Torch Development Area  
Zhongshan City  
Guangdong China 528437

T +86 760 899 370 38  
F +86 760 899 370 39  
E [ckirin@lightforms.com](mailto:ckirin@lightforms.com)