

Platform – PF

LED — 149 mm x 25 mm

FEATURES

Individual Fixture,
Continuous Run or
Configured Shape

Indirect Distribution

Up to 4964 LM/M
and 99 LM/W

Three Standard
Output Options

Tunable White
and RGB+W Options

Integral DALI, DMX
or Non-Dim Driver

Dimming Down to 0%

Integral Downlight
Spot Options

Integral Sensor
Options

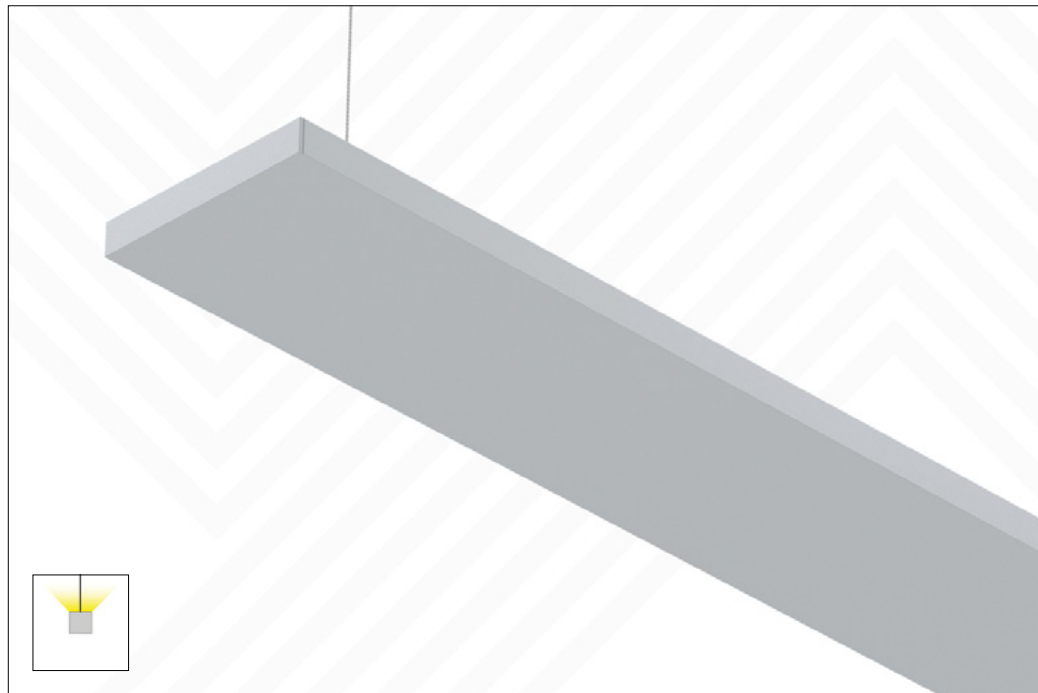
Aluminium, White,
Black, Bronze or
Custom RAL Finish

OSRAM

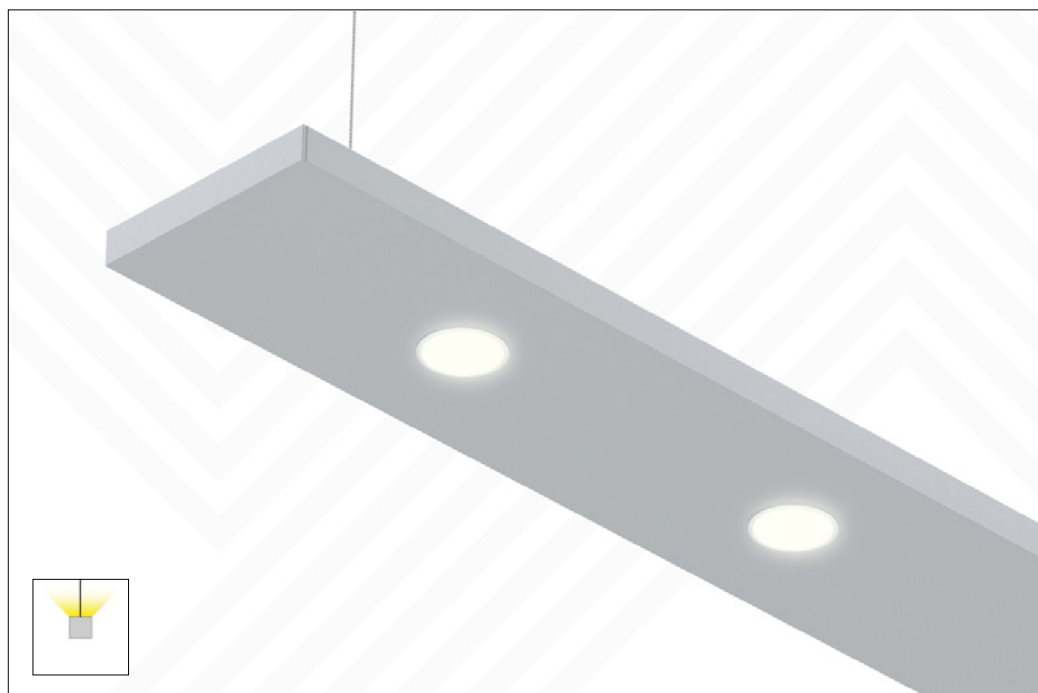
LED Drivers &
Light Engines
Included

*Exceptions
may apply.
Enquire for
more details.*

SUSPENDED



SUSPENDED WITH OPTIONAL DOWNLIGHT SPOTS



INSTRUCTIONS

Digital users: Check selection boxes and fill in fields directly in fillable, interactive PDF, save file, submit to Light Forms.

Manual users: Check selection boxes and fill in fields with pen, scan and save ALL pages as PDF document, submit to Light Forms.

1. BASE MODEL / MOUNTING Select ONE

PFS

Suspended

2. SIZE* Select ONE (linear or shape) and enter required length(s) in metres, ex: STR/20.5, US/9/7/6.5**INDIVIDUAL OR CONTINUOUS RUN****LINEAR**

STR

Straight

LENGTH A**CONFIGURATION****SHAPE***

SQ

Square

REC

Rectangle

LL

L - Left

LR

L - Right

CX

Cross

TEE

T - Shape

US

U - Shape

ZL

Zed - Left

ZR

Zed - Right

LENGTH A**LENGTH B****LENGTH C**

Straight
STR



Square
SQ



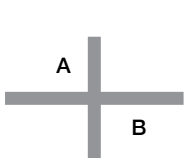
Rectangle
SQ



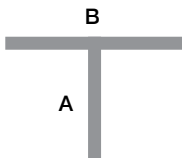
L - Left
LL



L - Right
LR



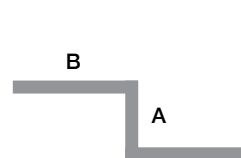
Cross
CX



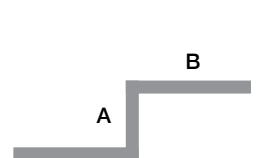
T - Shape
TEE



U - Shape
US



Zed - Left
ZL



Zed - Right
ZL

*All Shapes are manufactured with 45° angled cuts to form 90° angle joints except CX and TEE which are made and joined using complete, uncut fixtures. Contact Light Forms for additional, custom shape configurations, ex: triangles, octagons, etc.

3. INDIRECT LINEAR LAMPING & LENS Select NONE or ONE from each category (note exceptions below)

NONE

Select when specifying downlight spots only

OUTPUT**CRI****CCT****LENS**

MIN

80

2700K

FROST

Semi-frosted

LOW

90

3000K

MED

3500K

TUNE/LOW*

4000K

TUNE/MED*

5000K

RGBW^

6500K

*For TUNE/LOW and TUNE/MED, CRI and CCT do not apply (leave unchecked).

^For RGBW, CRI does not apply (leave unchecked) and select 3000K or 4000K CCT only. White LEDs can remain uncommissioned for RGB-only output.

4. DOWNLIGHT SPOTS* Select NONE or ONE from EVERY category (note exceptions below)

NONE

Select when specifying linear lamping only

QUANTITY***OUTPUT****CRI****CCT****BEAM DEGREE**

MIN/S^

80

2700K

15 15° spread

LOW/S^

90

3000K

25 25° spread

TUNE/S#^

4000K

40 40° spread

RGB/S#^

*Contact Light Forms for desired spacing of spots within the fixture

*For TUNE/S and RGB/S, CRI and CCT do not apply (leave unchecked)

^Specification of downlight spots will increase overall height of the fixture, contact Light Forms for details

5. INTEGRAL DRIVER* Select ONE

NONDIM

Non-dimming

DALI#

DALI driver, dimming down to 1%

DMX^

DMX driver, dimming down to 1%

*Driver selection applies to direct, indirect and/or downlight spots. Contact Light Forms if separate driver types for each are required.

#DALI is required for use with TUNE/LOW and TUNE/MED; DALI (or DMX) is required for RGBW

^DMX (or DALI) is required for use with RGBW. Specification of DMX driver will increase overall height of the fixture, contact Light Forms for details.

6. FINISH* Select ONE

AL	Anodised aluminium (standard)
WH	White powdercoat
BLK	Black powdercoat
BZ	Metallic bronze powdercoat
RAL/ _ _ _ _	Custom RAL [#] colour powdercoat, ex: RAL/3000

**Contact factory for additional finish options including Interpon, Farrow & Ball and silver and gold plating*

[#]See RAL colour options and codes at lightforms.com/RAL

7. POWERFEED COLOUR Select ONE

GP	Grey (standard for suspended, default for other mountings)
WP	White
BP	Black
TP	Transparent
XP	Custom colour (contact Light Forms for options)

8. CANOPY Select ONE

STD	115mm canopy for each separate powerfeed and suspension point (standard)
SMALL	82mm canopy for each separate powerfeed and suspension point
COMBO	115mm combo canopy for locations with both a powerfeed and suspension point

9. OPTIONAL ADD-ONS Select as many as apply

A. EMERGENCY

EM [#]	Integral, 3-hour emergency battery, manual testing
EM/DALI [#]	Integral, 3-hour emergency battery with DALI interface, automatic testing
EC	Emergency circuit

B. SENSOR

PRES [#]	Integral, PIR presence detector
DALI/PRES [#]	Integral, DALI-compatible PIR presence detector
PHOTO [#]	Integral, photocell/daylight detector

C. WIRELESS CONTROL

OLP ^{#*}	Integral, Osram Lightify Pro wireless control module
-------------------	--

[#]Specification of integral emergency battery, sensor and/or wireless control module will increase overall height of fixture, contact Light Forms for details

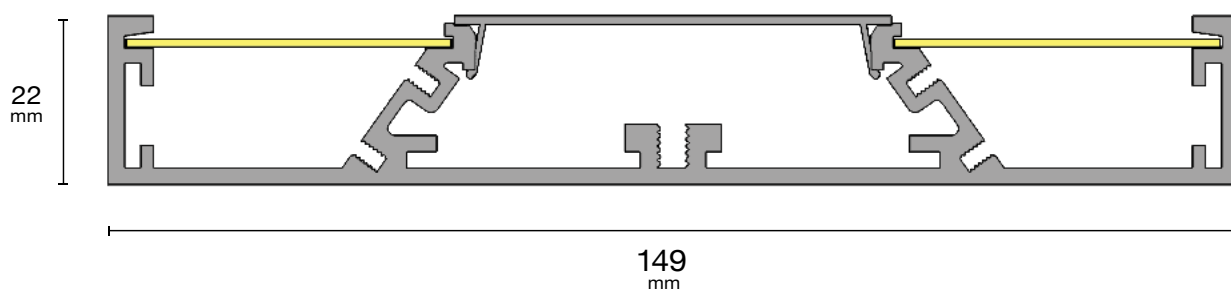
^{}Must choose DALI option in DRIVER section*

Platform

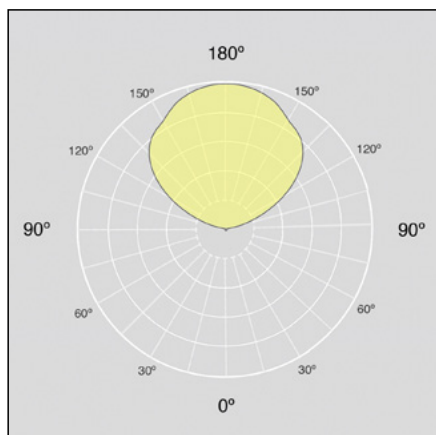
PF | Suspended

**LIGHT
FORMS**

DIMENSIONS



DISTRIBUTION



INDIRECT LINEAR LAMPING – OPTIONS & PERFORMANCE DATA*

OUTPUT OPTIONS	DELIVERED LUMENS* LM/M	WATTS* W/M	EFFICACY* LM/W	CRI OPTIONS	CCT OPTIONS	LENS OPTIONS
MIN[#]	1994	24	83	80 90	2700K 3000K 3500K 4000K 5000K 6500K	FROST
LOW[#]	2546	26.8	95			
MED[#]	4964	50	99			
TUNE/LOW^{#^}	Tunable White Standard 2290 (at 4000K)	28	82	80	2700K-6500K	
TUNE/MED^{#^}	Tunable White High 3244 (at 4000K)	44	74	80	2700K-6500K	
RGBW	Colour-Changing RGB+White N/A (entire system) 600 (white only)	38.4 (entire system) 18 (white only)	N/A (entire system) 33 (white only)	N/A (entire system) 80 (white only)	3000K 4000K	

L80 > 50,000 hours

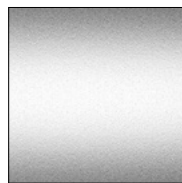
Luminous flux +/- 5%

**Performance data is based on a connected-load photometric test of MED output with 80 CRI at 4000K using a DALI driver and FROST lens. Data values for all other outputs are extrapolations.*

^Performance data is extrapolated based on a 4000K setting. Cooler and warmer CCT settings will provide a slight decrease in performance – lower lm/m, higher W/m, and lower lm/W.

LENS

FROST is a semi-frosted, clear lens that produces great output, yet with less homogeneous light across the lens surface.



Semi-Frosted
FROST

DOWNLIGHT SPOTS – OPTIONS & PERFORMANCE DATA*

OUTPUT OPTIONS	DELIVERED LUMENS LM/UNIT	WATTS W/UNIT	EFFICACY LM/W	CRI OPTIONS	CCT OPTIONS	BEAM DEGREE OPTIONS
MIN/S [#]	1101	11.6	95	80 90	2700K 3000K 4000K	15 25 40
LOW/S [#]	1430	15.9	90			
TUNE/S	Contact Light Forms for Options & Details					
RGB/S	Contact Light Forms for Options & Details					

L80 > 50,000 hours
Luminous flux +/- 5%

**Performance calculations are based on
connected load, photometric tests with
80 CRI at 4000K and 40° beam spread.*

SPOTS



Minimum
MIN/S



Low
LOW/S

Contact Light
Forms for
Options
& Details

Tunable White
TUNE/S

Contact Light
Forms for
Options
& Details

RGB
RGB/S

SPECIFICATION DETAILS

HOUSING

100% recyclable, extruded architectural grade aluminium with minimum 2mm thickness.

FINISH OPTIONS

Standard finish is "Ultimatte" aluminium - a smooth, clean and durable finish achieved from a deep etch, two-step clear anodising process. White, Black, Bronze or custom RAL powdercoat options are also specifiable. Contact Light Forms for other finish options (Interpon, Farrow & Ball, and silver and gold plating).



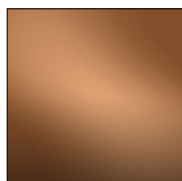
Aluminium
AL



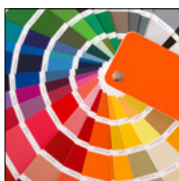
White
WH



Black
BLK



Bronze
BZ

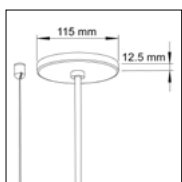


Custom RAL
RAL

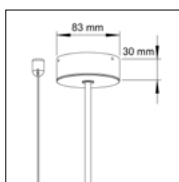
View all RAL
colour options at:
<https://lightforms.com/RAL>

SUSPENSION MOUNT CANOPY OPTIONS

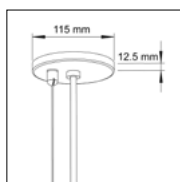
Standard (STD) comprises separate 115 mm powerfeed canopy and cable bullet at powerfeed locations. SMALL comprises separate 85 mm powerfeed canopy and cable bullet at powerfeed locations. COMBO comprises combined 115mm canopy (canopy and cable bullet) at powerfeed locations. All options include cable bullets for non-powerfeed locations.



Standard
STD



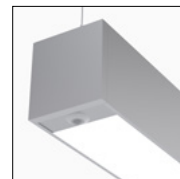
Small
SMALL



Combo
COMBO

INTEGRAL SENSORS

Optional, presence (PRES), DALI-compatible PIR presence (DALI/PRES) and daylight harvesting (PHOTO) sensors available. Contact Light Forms for further information.



INTEGRAL DOWNLIGHTS

Optional, aimable accent downlight spots deliver up to 1430 lumens with beam spreads from 15° to 40°. Limitations apply. See Downlight Spots chart for further information.

WEIGHT

Approximately 3386 grams per linear metre. Weight will increase with the addition of integral downlights, sensors, and emergency batteries and may vary further depending on mounting and other options.

OPERATING TEMPERATURE

Luminaire MUST be installed and operated ONLY in dry or damp environments where the ambient temperature ranges from -20°C to 50°C. Luminaire operation in environments outside this temperature range voids the warranty AND may damage the product or adversely impact lamp life, lumen output and colour consistency.

WARRANTY

5-year limited warranty. Details: lightforms.com/warranty

MANUFACTURING & CERTIFICATION

Products are manufactured in and comply with the health, safety and environmental protection standards of the respective region in which they are sold as indicated below.



Europe



Asia



Greater India
+ Middle East

Platform

PF | Suspended

**LIGHT
FORMS**

PHOTOS

